



Brick Lane, London

£250,000

Restaurant for sale

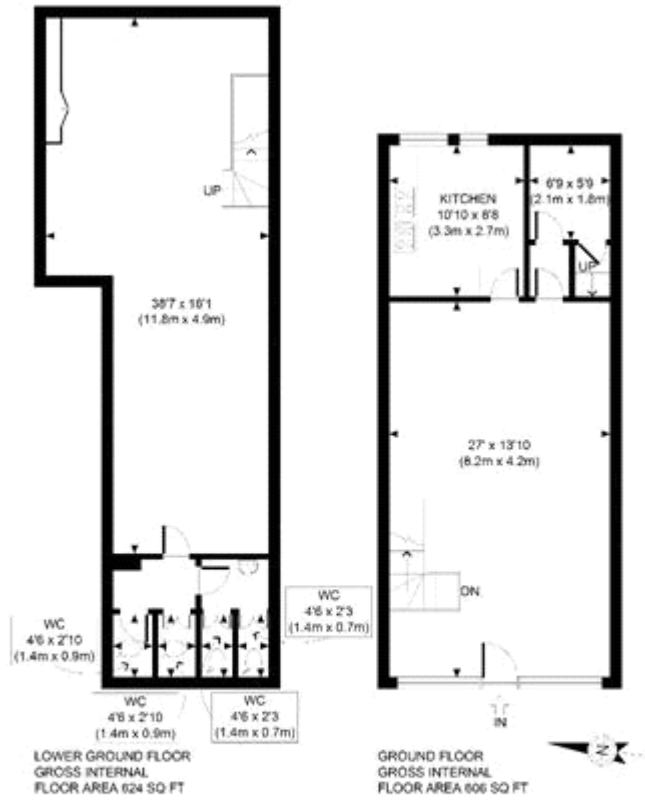
Description

The property is located on Brick Lane within close distance to Liverpool Street Station. A vital thoroughfare to the financial district, Bishopsgate is in close proximity to numerous financial entities such as the Bank of England, Deutsche Bank and Lloyd's of London. The immediate vicinity will be further enhanced with the imminent completion of two developments, Principal Place and 22 Bishopsgate, providing the area with a larger office population and residential catchment.

Spitalfields has become one of London's most fashionable and desirable areas in recent years. Having been subject to considerable investment and regeneration since the erection of Spitalfields Market in 1991, it now attracts a trendy and edgy crowd drawn to the contemporary brands and innovative independents that have set up there.

Tenure





APPROX. GROSS INTERNAL FLOOR AREA 1230 SQ FT / 114 SQM

Brick Lane

Disclaimer: Floor plan measurements are approximate and are for illustrative purposes only. While we do not doubt the floor plan accuracy and completeness, you or your advisors should conduct a careful, independent investigation of the property in respect of monetary valuation.

15/08/24

photoplan



Viewing by appointment only
Allen Goldstein - Bloomsbury
104 Cromer Street , London WC1H 8BZ
Tel: 020 7183 4101 Email: enquiries@allengoldstein.com Website:
<https://www.allengoldstein.com>